



SYDNEY



☎ 763-2272 / 010-7928-4688 / E-mail: hanatour24jm2@gmail.com / Facebook: Hana Express Travel with DAEGU FMWR

06 – 11 NOV 2025 (4N6D)

	Korean Air
	Departure : [KE1410] 2025.11.06 (Thu) 16:30 → 2025.11.06 (Thu) 17:40 (01h 10m)
	[KE0401] 2025.11.06 (Thu) 18:45 → 2025.11.07 (Fri) 06:55 (11h 10m)
	Arrival : [KE0402] 2025.11.11 (Tue) 09:10 → 2025.11.11 (Tue) 17:50 (09h 40m)
	[KE01409] 2025.11.11 (Tue) 19:35 → 2025.11.11 (Tue) 20:45 (01h 10m)
Price	Adult : \$3,730, Child : \$3,630, Baby : \$300, Family of 4 : \$14,000, Single Room : \$250(Additional) - Early Birds Dead line : 10 SEP 2025 Adult: \$3,900, Child: \$3,800, Infant: \$400, family of 4: \$15,200, Single Room Extra Fee: \$350
Option	Price Includes: Toll, Parking Fee, Bus, Round-trip air ticket, Hotel room, 14 meals, Entrance fee, Guide/driver expenses, Travel Insurance, Visa Price Excludes : Personal travel expenses Manner tips are a voluntary choice of the consumer and there are no disadvantages depending on whether or not to pay.
Remark	The schedule may change depending on the airline and local circumstances. Deadline for sign up : 05th SEP 2025(Depend on flight and hotels situation) No refund after 18:00 on 03th OCT 2025 After our notice the cancellation is not available. (After Reservation for hotel and flight) Basic travel insurance is provided, and if there is a change in flight or hotel schedule due to a natural disaster, the cost will be borne by the customer. If you need higher travel insurance, please apply individually.

DAY1

Daegu, Busan, Incheon, Sydney

11:30 Camp Carroll Outside Gate4

12:30 Camp Walker Commissary

KOREAN AIR Korean Air
01 hour 10 minutes KE1410

16:30

2025.11.06(Thu)
Departure from Busan PUS

17:40

2025.11.06(Thu)
Arrival at Seoul ICN

Busan

Depart from Busan International Airport

USFK Personnel is responsible for knowing and bringing all necessary USFK leave slips, travel orders, etc. while traveling. Hana Tours and MWR will not issue a refund if you do not have the appropriate paperwork. Please check with your chain of command prior to travel.

KOREAN AIR Korean Air
11 hour 10 minutes KE0401

18:45

2025.11.06(Thu)
Departure from Seoul ICN

06:55

2025.11.07(Fri)
Arrival at Sydney SYD

Incheon - Transfer at Incheon Airport

Depart from Incheon International Airport

USFK Personnel is responsible for knowing and bringing all necessary USFK leave slips, travel orders, etc. while traveling. Hana Tours and MWR will not issue a refund if you do not have the appropriate paperwork. Please check with your chain of command prior to travel.



Dinner in-flight - included



Sydney

Arrival at Sydney International Airport

Sydney immigration information

Sydney Preparation Guid/ Preparations/Procedures Before Leaving Korea

Essential documents for travel, simple guide, immigration information, and details.

1. Passport validity of at least 6 months
2. Round-trip air ticket: Have an outbound ticket within 30 days of entry.
3. There must be at least 3 pages remaining in your passport.
4. Electronic visa (E-Visa) issuance required (required documents will be announced later)



DAY2

Sydney

Manly Beach, The Corso



Breakfast - in-flight - included

Manly Beach - Manly Beach, where white waves crash ceaselessly

A beach resort in Sydney that is on par with Bondi Beach. There is a legend(?) that Arthur Phillip, who first landed here in 1788, muttered that it was a place where 'manly' people lived after seeing the proud appearance of the natives. It was developed as a resort in earnest in the mid-1850s, so it is safe to say that it is Australia's first beach resort in historical terms.

If you take a bus from downtown Sydney, you have to cross mountains and water for several hours, but if you take a ferry, it only takes 30 minutes, and if you take a high-speed Jet Cat, it only takes 15 minutes. There is a bus stop right in front of you when you leave the pier, and you can catch a bus to North Head Point (observatory) here. Across the street is The Corso, a busy street leading to Manly Beach.

The waves are strong, making it perfect for surfing. The white sand beach is a bit rougher and mixed than Bondi Beach, so it is not clean. The coastal promenade continues to the east, and there are small beaches such as Shelly Beach in the inner area. The bustling area of Manly Beach is Corso Street, and convenient facilities such as shopping centers, restaurants, and supermarkets are gathered around this area. A semicircular theater buried underground in the middle of Corso Street holds various performances every day.



The Corso - A street connecting the harbor shops and the famous beach.

The Corso is bustling with surfers and is lined with cafes, bars, restaurants and other shops. Visitors can order a fish and chips and spend some leisurely time admiring the surrounding scenery. On weekends, the Manly Arts and Craft Market is held here, offering a variety of things to see, including vintage goods and handmade leather goods.



Lunch - Local food

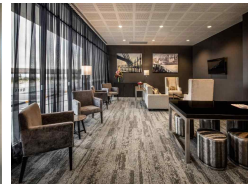
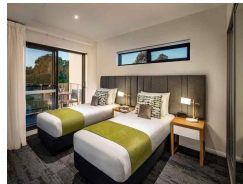
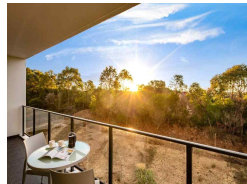
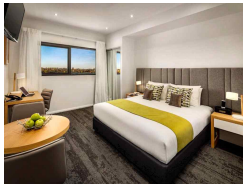


Dinner - excluded

Hotel Check in

4-star, Based on 2 persons per room

Quest Bella Vista is a 4-star hotel located in Sydney, the perfect choice for a complete relaxation. Check-in is from 2pm and check-out is until 10am. The hotel bar offers a variety of drinks and cocktails in a relaxing atmosphere. The hotel's beautiful gardens are a great place to relax and enjoy nature. There is a golf course on site, making it a great choice for golfers. You can enjoy the beautiful scenery and abundant nature while playing golf. There is also a fitness center to help you maintain your health. The fitness center is open 24 hours a day and is free to use. The hotel offers 24-hour room service, laundry service, safety deposit boxes, concierge services, free Wi-Fi in public areas, designated smoking areas, free Wi-Fi in all rooms, dry cleaning, express check-in/check-out, luggage storage, vending machines, daily housekeeping, and laundry services. Quest Bella Vista offers a range of amenities to ensure a comfortable stay for guests. The hotel offers 24-hour room service, so guests can enjoy their meals in the comfort of their rooms.



24h
front desk



Laundry facilities



Fitness



Wifi
(free)

DAY3

Sydney, Port Stephens

4WD Desert Tour, Sand sledding, Stockton Beach, Murray Winery, Dolphin Cruise



Breakfast - Hotel style



Go to Port Stephens



Port Stephens

4WD Desert Tour - A thrilling tour through the twists and turns of the vast sandy desert using a four-wheel drive vehicle

Experience the thrill of driving over the curves of the vast sand dunes starting from Stockton Beach in a four-wheel drive vehicle. There are small and cozy sand dunes as well as huge sand dunes with a slope of over 100 meters. Weave between them and enjoy the unique scenery outside the window. In particular, the view of Stockton Beach and the vast ocean from the top of the sand dunes is spectacular.



Sand sledding - Sand sledding, a unique experience only available in the desert

You can enjoy the thrill of sand sledding, reminiscing about the snow sledding you used to do as a child. After racing through the sand desert with a four-wheel drive, you can enjoy the exciting experience of sliding down a 100-meter-tall sand dune on a sled. A good posture when sand sledding is to put both feet together and fit them into the front groove of the sand board, fit your buttocks into the back groove, and then put both arms back at 45 degrees to keep your balance by supporting yourself on the sand. You can also ride by fitting both feet into the front and back grooves like snowboarding.



Stockton Beach - Stockton Beach, as blue as the sky

Stockton Beach, with its blue South Pacific Ocean and endless white desert, is another pride of Port Stephens where you can enjoy an exotic atmosphere. The beach, which stretches for about 40km, is so vast that it even forms a desert, and just climbing up the desert hill and looking down at the South Pacific Ocean is an ecstatic place.

Most of the people who visit here ride a four-wheel drive vehicle and have a thrilling ride here and there on the desert hill, and then briefly ride a sand sled down the steep and deeply dented sand hill, and after looking around the desert hill, they ride a four-wheel drive vehicle again and come down to Stockton Beach to enjoy the beach.



Murray Winery

Murray Winery is located in a beautiful vineyard in the pristine coastal environment of Port Stephens. They produce and sell unique handcrafted beers and wines of proven quality, and the winery is nestled in 40-year-old vineyards and eucalyptus, offering a tasting of around 20 local wines. The restaurant offers a variety of dishes to pair with the beers and wines.



Lunch - Local food

Dolphin Cruise - Dolphin Cruise where you can see wild dolphins

This is a cruise tour where you can see dolphins. It takes about 1 hour and 30 minutes and sails to places where there are many dolphins. The ship consists of the first and second floors, and there is a restroom on the first floor and drinks and alcohol are also sold. The first floor has windows to block the wind, but the second floor does not, so the second floor may be better for enjoying the cool breeze.

ⓘ Depending on the situation, dolphins may not appear and you can play in the water at the back of the boat. (Prepare swimsuits, towels, etc. separately)



Go to Sydney (Transportation: Bus, takes about 3hours)



Dinner - Local food

DAY4

Sydney, Katoomba

Sydney Zoo, Blue Mountains National Park, Three Sisters, Echo Point, SCENIC SKYWAY, SCENIC RAILWAY, SCENIC CABLEWAY, Laura Village



Breakfast - Hotel style

Sydney Zoo - The largest zoo in the Southern Hemisphere

Sydney Zoo, located about 40 minutes by car from Sydney City, is the largest zoo in the Southern Hemisphere. You can see Australia's representative animals such as koalas, kangaroos, Tasmanian devils, wombats, and dingoes, and there are various things to enjoy and see, such as an aquarium with penguins and sharks, reptile house, and animals from all over the world including Asia and Africa.



Go to Blue Mountains



Katoomba

Blue Mountains National Park - A national park known as the Grand Canyon of Australia

The Blue Mountains National Park, located about 60km west of Sydney, is called the Grand Canyon of Australia. There are 26 villages, including Glenbrook, Katoomba, Mount Victoria, and Laura, and many tourists visit every year because of the beautiful scenery. It consists of sandstone plateaus and gorges covered with temperate eucalyptus, and the sap from the eucalyptus reflects the strong sunlight, giving the entire mountain a blue color, hence the name Blue Mountains. It was registered as a UNESCO World Natural Heritage site in 2000 and consists of a total of eight protected areas. It is also a significant area where about 90 species of trees belonging to the eucalyptus taxonomy and rare creatures live together.



Three Sisters Peak - The sad legend of the indigenous people surrounding the Three Sisters

There is a sad legend about the Three Sisters among the local aborigines. Long ago, a magician lived with three beautiful sisters, and the devil heard about the sisters and tried to kidnap them. At that time, the magician turned the three sisters into three rocks and fought the devil. However, during the fight, the magician was in danger and lost the staff that could cast the spell, so the three sisters have remained as stones to this day. And the magician turned into a crow and is said to search for the staff somewhere in the Blue Mountains.



Echo Point - A lookout point with a panoramic view of the Blue Mountains

Echo Point, located in Katoomba, Blue Mountains, is the best place to see the vast expanse of the Blue Mountains, including the unusual three rock formations known as the Three Sisters. There is no concept of echo in Australia, but this is the only place where you can hear an echo.





Lunch - Steak(Palais Royal Boutique Hotel Restaurant)



Palais Royale Boutique Hotel is a World Heritage listed boutique hotel located in the heart of Katoomba, close to local attractions such as the Three Sisters, Echo Point and Scenic World. With a heritage theme, you can enjoy premium Australian clean steaks in this beautiful hotel.

※ If the restaurant is unable to accommodate your reservation, you may be transferred to a restaurant located in the Blue Mountains.

SCENIC SKYWAY - Take a cable car with a panoramic view and enjoy the green primeval forest

Two hours from Sydney, Scenic World in the Blue Mountains offers a variety of ways to experience the vast expanse of native forest, with cable cars, trains and walkways. The Scenic Skyway is a floor-to-ceiling glass cable car that takes you 270 metres above the ground, offering a 360-degree view of the Katoomba Falls, Three Sisters and Jamison Valley. If you're afraid of heights, there's another cable car with a closed floor. The final stop, East Station, is Echo Point, which overlooks native forest valleys and bush tracks.



SCENIC RAILWAY - The thrill of the Scenic Railway in the Blue Mountains

The funicular is an amusement facility near the Blue Mountain Echo Point Lookout, and is a restored version of the ones used in the past when mining coal in the Blue Mountains. You can usually enjoy the funicular together with the Echo Point tour, and you can ride the funicular at a 50-degree incline and go into the darkness to experience the past coal mining site. You can ride the funicular down from the high ground where the facility is located and come back up right away, or you can get off at the point where you arrived and enjoy a walk in the Blue Mountains before taking the cable car or funicular back up.



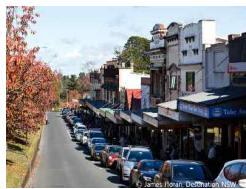
SCENIC CABLEWAY - Blue Mountain Cable Car Scenic Sender

Most people take the Scenic Cender cable car, which runs in conjunction with the Katoomba Scenic Railway, when touring the Blue Mountains. You can take the Scenic Cender cable car down and enjoy a walk, admiring the Blue Mountains' bush and seeing the remains of the former coal mining site. Afterwards, you can take the Scenic Cender cable car back up. The crew that operates the Scenic Cender cable car is charming with their witty speech and gestures. During the ride, you can enjoy the scenery created by the trees, ferns, and birds of the Blue Mountains.



Laura Village - A small but charming town with over 100 years of history

Laura Village, also known as the Garden Village, is one of the beautiful and peaceful villages near Sydney. There are many amenities such as restaurants, galleries, and shops, so it is a good place to explore. All developments in Laura Village are managed by the Blue Mountains City Council, and even the color of the buildings is planned and carried out under strict regulations, so that the small but charming village has been maintained for a long time.



Go to Sydney (Transportation: Bus, takes about 2 hours)



Sydney



Dinner – Buffet

DAY6

Sydney

Bondi Beach, Gap Park, Inside Sydney Opera House Tour, Opera House, Sydney Cruise



Breakfast - Hotel style

Bondi Beach - Bondi Beach, a favourite beach for Sydneysiders

Welcome to Bondi Beach~ . Welcome to Bondi Beach. Bondi, the most famous beach in Australia, is loved for many reasons. The first reason is the golden sand and blue sea, and the second reason is that there is a village with cafes, restaurants, and designer shops behind the beach street, so you can feel the exotic atmosphere. And there is a wonderful walking course between the white sand and an eye-catching seawater pool. It is a place you can't just pass by. It is a time that you will miss as soon as you close your eyes, take off your shoes and feel the sand, the wind, and the sea.



Gap Park - A wonderful place with a beautiful sea view

Gap Park is located a little way down from Dudley Page, and the view of the white waves crashing under the layered cliffs is amazing. It is called Gap Park because the view of Sydney's ocean through the gaps in the cliffs is beautiful. The cliffs look as if they were artificially carved, and you can see the rock formations that the waves have eroded over a long period of time. This area used to be controlled because the cliffs were dangerous to fall at a 90-degree angle, but now they have fences to protect you.



Lunch - Pasta

Inside the Sydney Opera House Tour - Take a step inside Sydney's landmark

Discover the story and history of the world-famous Sydney Opera House and why it is a Sydney icon on this guided tour. Place your hands on the seashell tiles, sit in elegant custom-made birch chairs and admire the vaulted ceilings, and you will remember this moment from wherever you see the Opera House.

i If the Opera House interior tour is not available due to local circumstances, it will be replaced with <Exterior Viewing + Sydney Aquarium> or <Exterior Viewing + Tea Time + Sydney Tower Tour>.



Opera House - One of the most beautiful buildings in the world

It is a landmark of Sydney and a representative modern building in Australia, with an impressive shell-shaped exterior. The Opera House was designed by Danish architect Jom Utzon, who won an international design competition in 1957. He came up with this unique design while peeling an orange during breakfast. After 16 years of construction, it opened in 1973, and Queen Elizabeth of England attended the opening ceremony. Inside, in addition to the concert hall and opera theater, there is a drama theater and a small theater.



Sydney Harbour Bridge(viewing tour)

- A must-see in Sydney, the world's fourth longest arch bridge

The Sydney Harbour Bridge is the fourth longest single arch bridge in the world and is a symbol of Sydney Harbour. It is a large bridge with a height of about 59m from the sea level to the road, and is nicknamed the 'Old Coat Hanger' because of its shape that resembles a coat hanger. The total length of the bridge is 1,149m, which is about 60cm shorter than the Bayonne Bridge in New York. You can go up the bridge through the inside of the pylon that supports the bridge, and there is a sidewalk so you can walk north. In 1988, green lights were installed on the outside of the bridge to commemorate the 200th anniversary of the founding of Australia, and the lights are even more splendid at night. * This will be a viewing tour. * Feel free to take pictures with the Harbour Bridge in the background!



St Mary's Cathedral - St. Mary's Cathedral, a quaint Gothic landmark located near Hyde Park

St Mary's Cathedral, a large Gothic stone building, is located in the northeast of Hyde Park, in the heart of Sydney's city center. This cathedral is a landmark of Sydney, both historically and for its significance. The foundation stone of St Mary's Cathedral was laid in 1868 by Archbishop Bede Polding, and it was built on the site of Australia's first Catholic cathedral, which was destroyed by fire in 1865. This cathedral is the spiritual home of Sydney's Catholic community, and is the mother cathedral of Australian Catholicism, and is a beloved cathedral for many, often used as a wedding hall for couples.



Mrs. Macquarie's Point - A place where you can hold the Opera House and the Harbour Bridge in your arms

Mrs. Macquarie's Point, the most famous viewpoint in Sydney, is a place where you can hold the Harbour Bridge and the Opera House in your arms. When Australia was a British colony, the 5th Governor-General Lachlan Macquarie, who was dispatched by Britain, had no planes so it took a long time for him to return to Britain, and the place where his wife sat and waited was called Mrs. Macquarie's Chair. This place is loved by many people as the most beautiful view to enjoy in Australia.



Dinner - Sydney Sunset Dinner Cruise (Twilight Cruise)



Among the various cruises available in Sydney Harbor, this is a 1-hour cruise tour where you can enjoy a 3-course meal in the order of entry, main course, and dessert, with the romantic sunrise of Darling Harbor, which is loved by people around the world, as the background. There is a dining facility on the cruise where you can cook, so if you sit at a table set up like a restaurant and wait, a waiter or waitress will serve you the food you have just cooked. Create a romantic time with the Opera House and Harbor Bridge in the background at sunset on the open outdoor deck!

※ The ship you board may change depending on the day of operation.

※ The meals provided may differ from the images.

※ It may be difficult to observe the sunset during the summer season when the days are longer.

Sydney Night Tour

■ Simple Schedule

Hotel Pickup - Milsons Point - Harbour Bridge - DAWES POINT - Opera House - Hotel Drop Off

① Drinks provided at the night view point

※ May be canceled in case of rain.

- The night view tour is conducted as a walking tour where you can experience the night view spots directly.
- The guide may change during the night view tour, and you may join another team.
- The schedule order may be changed.
- No additional costs or schedule disadvantages for non-participation



DAY6 Sydney, Incheon, Busan, Daegu

Guide meeting after check out



Go to the airport



Sydney

KOREAN AIR Korean Air

09 hour 40 minutes KE0402

09:10

2025.11.11 (Tue)
Departure from Sydney SYD

17:50

2025.11.11 (Tue)
Arrival at Seoul ICN



Breakfast - in-flight - included



Lunch - in-flight - included



Incheon

 **KOREAN AIR** Korean Air
09 hour 40 minutes [KE1409](#)



19:35

2025.11.11 (Tue)
Departure from Seoul ICN



20:45

2025.11.11 (Tue)
Arrival at Busan PUS



Busan



Camp Walker Commissary



Camp Carroll Outside Gate4