



# JEJU ISLAND

☎ 763-2272 / 010-7928-4688 / E-mail: hanatour24jm2@gmail.com / Facebook: Hana Express Travel with DAEGU FMWR

## 14 – 15 DEC 2024 (1N2D)

T'way Air



Departure : 2024.12.14(Sat.) 08:30 → 2024.12.14(Sat.) 09:35 (1h5m)

Arrival : 2024.12.15(Sun.) 18:30 → 2024.12.15(Mon.) 19:30 (1h)

**Price** Adult: \$359, Child: \$355, Infant(under 24 month) : \$90, Family of 4 : \$1,420, Single Room : \$70

### Option

**Price Includes** : Toll, Parking Fee, Bus, Round-trip airline ticket, Hotel room, 3 meals, Entrance fee, Guide/driver expenses, Performance, Picking Tangerine, Yacht(fishing, snacks)

**Price Excludes** : Personal travel expenses (water, personal expenses during free time, etc.)

※ Manner tips are a voluntary choice of the consumer and there are no disadvantages depending on whether or not to pay.

### Remark

The schedule may change depending on the airline and local circumstances.

**Deadline for sign up: 03<sup>rd</sup> Dec 2024(Depend on flight and hotels situation)**

**Refund : 03<sup>rd</sup> DEC 2024**

## DAY1 Daegu, Jeju



### Daegu

Depart from Daegu International Airport

USFK Personnel is responsible for knowing and bringing all necessary USFK leave slips, travel orders, etc. while traveling. Hana Tours and MWR will not issue a refund if you do not have the appropriate paperwork. Please check with your chain of command prior to travel.

**t'way** T'way Air  
01h 05m TW9801

**08:30**

2024.12.14.(Sat)  
Departure from TAE, Daegu

**09:35**

2024.12.14.(Sat)  
Arrival at CJU, Jeju



### Jeju, Daegu

Arrival at JEJU International Airport

### *Jeju Taekwon Martial Art Hon*

This performance is for those who want to experience the beauty of Korean martial arts and dance. They were officially invited to 105 cities in 15 countries around the world, including the 2018 PyeongChang Winter Olympics.

It tells the story of Taegeuk, a warrior who founded the martial arts group Taegeukwon to protect the millennium kingdom of Tamna, and his fellow warriors as they fight against the forces of evil. It naturally combines Jeju's legends with comical and romantic sensibilities. Themes of inner peace and free will are revealed through the conflict between good and evil. In addition, the use of 'Arirang', a song representing Korea, added a deeper resonance to the message.

It is a performance combining Taekwondo movements and acrobatic flair that will amaze everyone, from new martial artists learning Taekwondo to overseas visitors unfamiliar with martial arts. The highlight of the Taekwondo demonstration is the plank breaking event, in which practitioners jump to a height greater than that of an average adult and break the target with kicks.





## Lunch – Local food

### Seongeup Folk Village

About 8km north of Pyoseon-ri, you will find Seongeup Village at the foot of Mt. Halla. Seongeup-ri was originally the capital of Jeongui-hyeon when Jeju Island was divided into three directional divisions (1410-1914), and it is a place that preserves the characteristics of Jeju Island's old houses. Many tangible and intangible cultural heritages are collectively distributed, and the old village-style folk landscape is well preserved, so it is designated and protected as a folk village to maintain its old appearance. Here, tangible cultural heritages such as old houses, hyanggyo, old government offices, stone grandfathers, lotus mills, castle sites, and tombstones, as well as intangible cultural heritages such as folk songs, folk games, local foods, folk crafts, and Jeju dialect unique to the central mountainous region are still being passed down. Natural monuments such as zelkova and pine trees provide a glimpse into the pride of a 500-year-old capital. Seongeup Folk Village, which best preserves Jeju's thatched houses, is where you can meet the Seongeup-ri residents who actually live in Jeju's thatched houses and Jeju's traditional toilets called 'tongsi'. In particular, the old-fashioned appearance of the village's old trees, stone walls, and old castle walls shows the history of the capital city for 500 years.

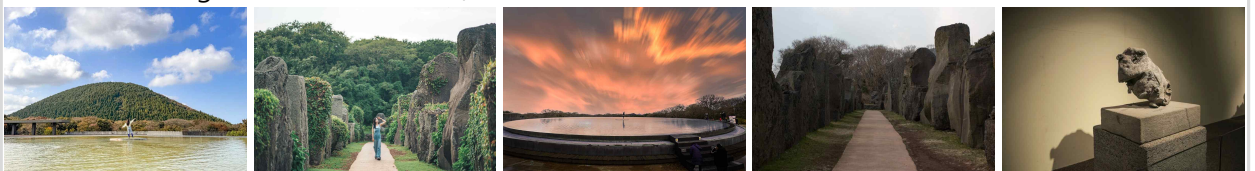


### Jeju Stone Culture Park

Of the 1 million pyeong of the park, 70% is a Gotjawal area with rocks, trees, and vines, including Swampseori, Keunjigri, Jageunjigri, and Banong Oreum. The first principle of the park's development was 'environmental preservation,' and based on this principle, a historical and cultural park was created that brings Jeju's identity, local character, and artistry to life. The park displays various stone exhibits based on 14,441 items donated by Tamna Mokseokwon. The first course (distance of 560m), the second course (970m), and the third course (780m) are divided into a tour, and it takes about 2 hours and 30 minutes to tour them all.

The park is largely composed of the Jeju Stone Museum, Stone Culture Exhibition Hall, Outdoor Exhibition Hall, and Jeju Traditional Thatched House Space. The Jeju Stone Museum is a three-story underground building with a total area of 9,904.43m<sup>2</sup>, and consists of the Stone Gallery (exhibition of Jeju's natural stones), Jeju Formation Exhibition Hall (exhibition of Jeju's volcanic activities, including oreums, caves, topography, groundwater, and volcanic eruptions), a video room, and a special exhibition hall. On the rooftop, there is a sky pond and a Byeokcheon Stream that are also used as a floating stage.

The Stone Culture Exhibition Hall consists of eight independent buildings, and exhibits themes such as prehistoric stone culture, dolmens, stone culture videos, clothing, food, housing, and play. The outdoor exhibition hall, with a site area of approximately 38,000m<sup>2</sup>, displays replicas and reproductions of Jeju's stone artifacts. You can see stone relics and tombs and folk beliefs related to the prehistoric and Tamna periods (Bukchon-ri Rock Shade Relics, Udo Cave Relics, Geumseong-ri Relics Stone Structures, Dolmen, and Seondol), the Goryeo period (Hawon-dong Tamna Prince's Tomb, Sujeongsaji Multi-story Stone Pagoda, Dongjabok and Seojabok, Jonjaamji Stupa, etc.), and the Joseon period (Dolhareubang, Samsaseok, Jocheonseok, Hoecheon-dong Stone Buddha, etc.).



### Jeju Traditional Market

Dongmun Traditional Market, which has a long history, is a representative market in Jeju

Island. Along with the adjacent Dongmun Traditional Fish Market, it is the core of Jeju's largest permanent market, established immediately after liberation in August 1945. Originally Jeju Island's only permanent market and center of commercial activity, this place was relocated to Jeju Island. We sell a variety of products, including vegetables, fruits, seafood, herbs, grains, and clothing.



**Dinner** – at the traditional market(Excluded)

### **Hotel Check in** - Hotel style

4-star, **Hotel SIRIUS JEJU** Based on 2 persons per room

Opened in 2018, Hotel Sirius boasts an elegant building design inspired by Jeju Island's columnar joints, stone pillars formed from majestic volcanic rock. This 4-star hotel offers free WiFi and ample parking.

Rooms feature premium bedding. The private bathroom includes a bidet and free toiletries.

A breakfast buffet featuring traditional Jeju food, plenty of fruits, Western food, and Korean food is served daily.

The indoor swimming pool, overlooking the airport runway, is located on the 10th floor and is open 24/7. The hotel also offers banquet halls of various sizes and a fitness centre.

Jeju International Airport is just a 5-minute drive from Hotel Sirius.



**24h**  
front desk



**free wi-fi**



**Laundry**  
facilities



**Swimming**  
Pool



**Spa**



**Fitness**

## **DAY2** Jeju



**Breakfast** - Hotel style

### **Yongmeori Beach**

Sanbongsan Mountain, meaning 'mountain with caves,' is a mountain where Sanbonggalsa Temple, a temple with a small Buddha statue, is located at the foot of the mountain. According to Jeju mythology, her grandmother, Seolmundae Halmang, created this mountain by throwing a stone from the summit of Hallasan Mountain. Sanbongsan Mountain, which stands tall at 395 meters above sea level on the southwestern coast of Jeju Island, is full of rapeseed flowers in spring, creating a picturesque landscape with Sanbongsan Mountain in the background.

Yongmeori Beach is a water-volcanic rocky coast formed by the accumulation of volcanic debris erupted from three craters under the sea. The coastal cliffs look like Yongmeori ('Yongmeori') due to long-term sedimentation and erosion. The strange cliffs created by the waves are spectacular. The coastal platform next to the sea serves as a promenade. On the way down to the beach, the Hamel Monument is erected to commemorate Hamel, who drifted here.

**ⓘ** If we are not allowed at Yongmeori beach due to weather or local situation, We will stop by Yongdoam / Yongyeon Bridge.





### **Lunch** – Local food

### **Tangerine Experience**

Experience tangerine picking, Jeju's famous seasonal fruit. Pick tangerine and bring it home(2kg included) and enjoy unlimited tangerine!



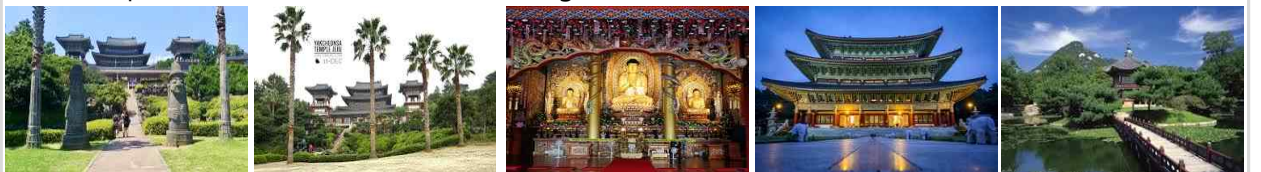
### **Yacht Tour**

Take a yacht tour of the calmest sea in Jeju Island, the Wolpyeong Coast. The most beautiful Mt. Halla, seen from the south, blocks the wind, and the breakwater-shaped Wolpyeong Coast terrain blocks big waves. Here, you can enjoy a snack, unlimited drinks, and fish cake soup. And this is a course where you can even experience sea fishing.



### **YakCheonSa** - Largest Temple in East Asia

Jeju Yakcheonsa Temple is the largest temple in Asia. It was originally a small hermitage called Yaksuam, but it was given the name Yakcheonsa because there was a famous mineral spring nearby. This is where the tombstones of two royal couples from the Joseon Dynasty, namely King Munjong and his queen, and King Yeongchin and his queen, are enshrined. Temple stays are also provided for both locals and foreigners.



Travel to the airport



**Jeju**

**t'way** T'way Air

01 시간 TW818

**18:00**

2024.12.15.(Sun)  
Departure from CJU, Jeju

**19:30**

2024.12.15.(Sun)  
Arrival at TAE, Daegu



**Daegu**