



# TAIWAN - Taipei



☎ 763-2272 / 010-7928-4688 / E-mail: hanatour24jm2@gmail.com / Facebook: Hana Express Travel with DAEGU FMWR

## 27 NOV – 01 DEC 2024 (3N5D)

Jin Air



Departure : [LJ0755] 2024.11.27.(Wed.) 23:10 → 2024.11.28.(Thu.) 00:20 (02h 10m)

Arrival : [LJ0756] 2024.12.01.(Sun.) 01:50 → 2024.12.01.(Sun.) 19:55 (04h 15m)

### Price

**Adult : \$1,800, Child : \$1,750, Baby : \$400, Family of 4 : \$7,000, Single Room : \$250(Additional)**  
**- Early Birds Dead line : 16 SEP 2024**

**Adult : \$1,650, Child : \$1,600, Baby : \$300, Family of 4 : \$6,400, Single Room : \$200(Additional)**

Price Includes: Toll, Parking Fee, Bus, Round-trip air ticket, Hotel room, 9 meals, Entrance fee, Guide/driver expenses, Travel Insurance

### Option

Price Excludes : Personal travel expenses

Manner tips are a voluntary choice of the consumer and there are no disadvantages depending on whether or not to pay.

### Remark

The schedule may change depending on the airline and local circumstances.

**Deadline for sign up: 15<sup>th</sup> OCT 2024(Depend on flight and hotels situation)**

**Refund : 18:00 16<sup>th</sup> SEP 2024.**

**After our notice the cancellation is not available. (After Reservation for hotel and flight)**

## DAY1

### Daegu, Taipei



**18:10 Camp Carroll Outside Gate4**



**19:10 Camp Walker Commissary**



Jin Air

02 hours 10 minutes LJ0755

**23:10**

2024.11.27 (Wed)  
Departure from Daegu TAE

**12:10**

2024.11.28 (Thu)  
Arrival at Taipei TPE



### Daegu

Depart from Daegu International Airport

USFK Personnel is responsible for knowing and bringing all necessary USFK leave slips, travel orders, etc. while traveling. Hana Tours and MWR will not issue a refund if you do not have the appropriate paperwork. Please check with your chain of command prior to travel.



**Dinner** in-flight - excluded (paid)



### Taipei

Arrival at Taipei national Airport

#### Taiwan Immigration Information

#### Taiwan Preparation Guid/ Preparations/Procedures Before Leaving Korea

Essential documents for travel, simple guide, immigration information, and details.

1. Passport validity of at least 6 months
2. Round-trip air ticket: Have an outbound ticket within 30 days of entry.



**After meeting with the guide, we will move to the hotel.**

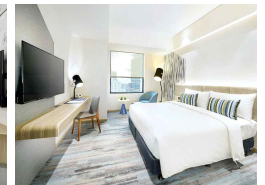
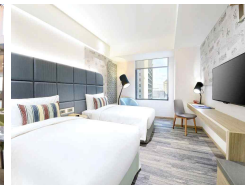
## **Hotel Check in** - Hotel style

**4-star, Based on 2 persons per room**

Cham Cham Hotel is a 4.0-star hotel located in Taipei, Taiwan. Check-in is from 3:00 PM, and check-out is until 11:00 AM.

The hotel offers laundry and dry cleaning services to ensure you always have clean clothes during your trip. A safety deposit box is also available for your safe deposit box. The hotel also provides a concierge service to assist with travel information and reservations. Free Wi-Fi is available in public areas and guest rooms. If you are traveling with heavy luggage, the hotel offers luggage storage for your convenience. Daily cleaning service is also provided to ensure you always have a clean and comfortable stay.

Cham Cham Hotel is ideally located for exploring Taipei's many attractions and tourist sites. Nearby attractions include Lin Family Garden, Pingxi Sky Lantern Festival, Chihri University of Technology, New Taipei City People's Square, Banqiao Stadium, Banshu Stadium, New Taipei City Hospital Banqiao Branch, Zhongshan Park, Bade Park, and Crescent Bridge. Lin Family Garden is known as one of the most beautiful traditional gardens in Taiwan. It consists of Chinese gardens and traditional Taiwanese architecture, and you can enjoy beautiful scenery and a peaceful atmosphere. Zhongshan Park, Bade Park, and Crescent Bridge are parks where you can enjoy nature and a quiet atmosphere, and are suitable for walking or resting. These various attractions and tourist sites are easily accessible, making your trip convenient.



**24h**  
front desk



**Laundry facilities**



**Laundry service**



**Wifi**  
(free)

## **DAY2**

### **Taipei**

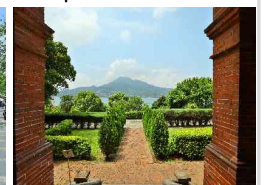
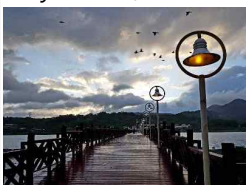
Tamsui, Hongmaoqing, Jinli University, Volcano 1914, Zhongshan Cafe Street & Taipei Film House, 101 Tower Observatory



## **Breakfast** - Hotel style

**Tamsui** - Tamsui, the filming location of the movie "Secret that Cannot Be Told", a romantic city with the sea as its friend

Tamsui is famous as the filming location for the 2008 movie Secret. Taiwanese locals also call Tamsui the port city of love, as Tamsui's beautiful sunset and unique leisurely atmosphere make it a great place to confess to the opposite sex. If you pass Tamsui Coastal Park and enter the side road of the promenade, you will see an alley crowded with people at the entrance. This is Tamsui Old Street. You can see antique shops and specialty stores from the 60s and 70s in Taiwan, and taste famous Taiwanese snacks such as iron eggs (stewed eggs in soy sauce), fish cake soup (fish ball soup), fish cake (fish cake), and giant fried squid.



**Hong Maoqing** - Hongmaoqing, built by Spain in 1629 and used as a fortress and consulate

The Hong Mao Building was built in 1628 by the Spanish army as the Government-General building. Its original name was Fort Santo Domingo. Afterwards, when the country ruling Taiwan changed, it was used as a Dutch fortress in 1644, and then as a British consulate from 1867 to 1980. The current Hong Mao Building was a name given to it by the Dutch. At that time, the Dutch were referred to as Hong Mao, meaning a person with red hair, and the name

came to mean a Dutch surname. Hong Mao Building, which preserves the painful history of being ruled by three European countries, is a first-class national historic site in Taiwan and the most beautiful viewpoint in Tamsui to enjoy the sunset.

※ Hong Mao Building is closed on the first Monday of every month, and the schedule is replaced with Warren Matou (Fishman's Wharf).



### **Jinli University** - Jinli University, built in 1882 and featured in the movie *The Secret That Cannot Be Told*

Jinli University, the first Western-style university in Taiwan founded by Father McKay in 1882, was used as a filming location for the movie *Secret*, and is still used as an actual university building to this day.



### **Lunch** - Local food, Dongporou

### **Volcano 1914** - A hot place full of Taipei's emotions

The Volcano 1914 Creative Cultural Park is a place where old factories and breweries have been reborn as cultural and artistic spaces, breathing new life into them. It is a unique space full of things to see and do, such as cafes, shops, and general stores with a different sensibility and vintage feel from downtown Taipei.



### **Zhongshan Cafe Street & Taipei Film House** - Jung-san Cafe

Street, where you can browse cafes and cute shops located in every alley

Zhongshan Cafe Street is lined with famous cafes, prop shops, and select shops, making it a place where you can enjoy brunch or leisurely spend your free time, each boasting their own unique sensibilities. Taipei Film House is a place where the former US Consulate building was renovated into a space full of film and art under the leadership of Taiwan's representative film director Hou Hsiao-hsien. It is located near Zhongshan Cafe Street, and has shops selling props and goods, cafes, and a movie theater.



### **Dinner** - Local Food, Din Tai Fung



Din Tai Fung is the first restaurant that comes to mind when thinking of Taiwanese food, and was selected as one of the world's top 10 restaurants by the New York Times. In addition to Taiwanese xiaolongbao, dim sum, and a variety of dumplings, you can also enjoy a variety of dishes, including noodles, rice bowls, and Taiwanese desserts. In particular, Din Tai Fung's signature menu items, xiaolongbao and rib fried rice, are popular menu items loved by Korean tourists.



## 101 Tower Observatory

Taipei 101 is the tallest building and landmark in Taiwan. Its unique appearance, which looks like a stack of towers, is impressive with its bamboo-motif design and joints every eight floors. If you take the high-speed elevator that was listed in the Guinness Book of World Records until 2015, you will arrive at the 89th floor observatory in just 37 seconds. There is also an outdoor observatory on the 91st floor. Climb up to the tallest skyscraper in Taiwan and take in the beautiful night view of Taipei with your own eyes.

※ Access to the 91st floor outdoor observatory of Taipei 101 may be restricted depending on weather conditions.



## DAY3

### Taipei

Yaryu Marine National Park, Flying a Shifen Lantern, Jiufen, Raohe Night Market



**Breakfast** - Hotel style

**Yaryu Marine National Park** - Yaryu Marine National Park, full of uniquely shaped rocks

The rocks here have been uniquely shaped by the erosion and weathering of waves for tens of millions of years, and there are huge egg-shaped rocks scattered around. In addition, the rock formations created by the waves have unique names, such as the Queen's Head Wearing a Crown, Egg Rock, and Bathing Beauty Rock, allowing you to fully enjoy the sculpting skills of the waves.

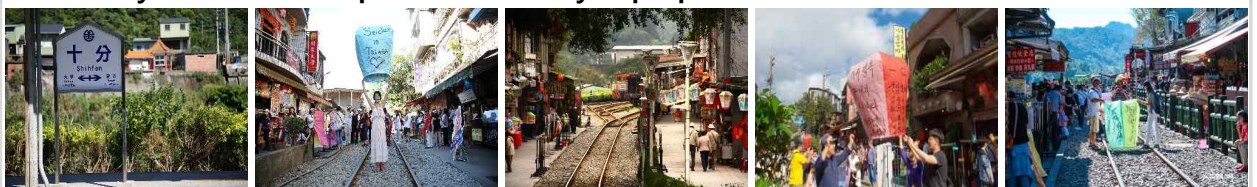


**Lunch** - Local food, Taiwanese set meal

**Flying a Shifen Lantern** - Let's make a wish and fly it to the sky, the highlight of Taipei travel - flying a sky lantern at Shifen Station

Shifen, a small station on the old Pingxi Line, has become famous for sky lanterns after being featured in various media such as "Grandpas Over Flowers" and the Taiwanese film "The Girl We Loved Back Then." There are shops selling various snacks and gifts along the train tracks, and it is always crowded with people making wishes on sky lanterns and releasing them into the sky.

※ One sky lantern will be provided for every 4 people.



**Jiufen** - Jiufen Street, a famous place for dramas and movies

Jiufen, once known as the largest mining city in Asia in the 1920s and 30s, has been reborn as a tourist city that takes advantage of its natural environment as the coal mining industry declines. There are various shops, teahouses, and restaurants along the winding alleys along

the hills. The top of the village, called "Geo-ding," is a place where you can overlook the beautiful village and the sea at a glance. The famous peanut ice cream here attracts many tourists, but if you don't like it, please tell them not to put it in ice cream.



### **Raohe Night Market** - Taiwan's four major night markets!

'Raohe Street Night Market', known as one of the four major night markets in Taiwan, has cleaner food than other night markets, and is a place that is constantly visited by visitors due to its cheap prices and variety of items. It is especially popular because it has a lot of food that suits Korean tastes. Must-eat foods at the market include hot pot dumplings, mango shaved ice, and beef noodles, and you can get drunk on their culture and atmosphere.



### **Dinner** - Taiwan beef noodle

## DAY4

### Taipei

National Palace Museum, Chiang Kai-shek Memorial Hall, Carrefour Shopping List in Taiwan, Yongsan Temple



### **Breakfast** - Hotel style

### **Individual free schedule until 11 o'clock**

- Meet your guide at the hotel lobby at 11:00.



### **Lunch** - Local food, Wonton Noodles + Xiao Long Bao

### **National Palace Museum** - One of the world's four major museums preserving 5,000 years of Chinese history

The National Palace Museum in Taiwan, one of the world's four major museums, has a collection of 700,000 items and shows the brilliant history of China. Popular collections are on permanent display, while exhibits such as jade, porcelain, paintings, and bronze are changed every three months. The scale of the museum is so large that you won't have enough time to see all the exhibits even if you spend a whole day there.

#### **National Palace Museum COVID-19 Quarantine Guidelines**

- ① When entering, have your temperature taken at the automatic temperature measuring machine at the entrance to the museum before entering
  - ② Wear a mask inside the museum
  - ③ Maintain a social distance of 1.5m while viewing
- ※ For the enjoyment of the viewing and everyone's safety, we ask for your cooperation in following the quarantine guidelines.





## **Chiang Kai-shek Memorial Hall** - Chiang Kai-shek Memorial Hall, built to commemorate Chiang Kai-shek

This is a place for former President Chiang Kai-shek of Taiwan. A large marble memorial hall stands on a vast, picturesque garden, and there are elegant pavilions and ponds. A 25-ton bronze statue of President Chiang Kai-shek overlooks the city from the main building, and the exhibition room on the first floor displays photos and memorabilia about the president's life. The square is a popular resting place for citizens, with many people enjoying Tai Chi, folk dancing, and badminton from around 5 a.m. every morning.



## **Carrefour Shopping List in Taiwan** - Recommended List 10

1. Dr. Q Konjac Jelly: This jelly contains 16-22% of Taiwanese tropical fruit juice, allowing you to feel the delightful texture of the fruit juice bursting in your mouth.
2. Emei Gummy Choco Ball: This gummy choco ball is known for its fantastic combination of chocolate and jelly.
3. Emei Egg Roll: When you put it in your mouth and take a bite, you can feel the crispy texture and the flavor of brown sugar. It's sweet but not boring, and it tastes even better with coffee or milk.
4. Taiwan Beer/Taiwan Beer: Taiwan's representative beers include original, fruit beer, and honey beer.
5. Bubble Tea Feng Li Su: Taste bubble tea Feng Li Su in Taiwan, the original bubble tea! If you want a special souvenir, buy a box.
6. Bubble Tea Nougat Crackers: This biscuit has the perfect combination of rich milk flavor and crunchy biscuit. The perfect sweet and salty ratio will disappear in no time if you just blankly eat it.
7. Mister Noodle: Korea is currently experiencing a mala craze. If you want to experience addictive spicy flavors, we recommend Mala Bibim Myun in Taiwan.
8. Dali Toothpaste: Dali toothpaste, which is recommended as a must-buy item on the Taiwanese shopping list, has a refreshing mint scent that leaves your teeth feeling refreshed for a long time after brushing.
9. Bear Air Freshener: Best value for money!! It comes in various scents such as fruity, morning fresh, and lavender with a scent that lasts for 8 weeks.
10. Feng Li Su: Feng Li Su, a representative pineapple snack in Taiwan. There are many flavors, so choose according to your taste!

✳ **Carrefour Free Time (Some items may not be on the above list depending on availability and local conditions)**



**Dinner** - Local food, Grilled dish

## **Yongsan Temple** - Yongsan Temple, the oldest temple in the world

Longshan Temple, founded in 1738, is the oldest temple in Taipei. The current building was rebuilt in 1975. The stone pillars are harmoniously carved with dragons and historical figures dancing behind them. The beautiful architecture alone makes it worth a visit. Here, you can get a close look at the religious life of Taiwanese people, along with the strong smell of incense burned by believers every day.



Move to the airport

**DAY5**

**Taipei, Daegu**



**Taipei**

 Jin Air

02 hours 25 minutes [LJ0756](#)

**01:50**

2024.12.01 (Sun)  
Departure from Taipei TPE

**05:15**

2024.12.01 (Sun)  
Arrival at Daegu TAE



**Breakfast** - in-flight - not included



**Daegu**



**Camp Walker Commissary**



**Camp Carroll Outside Gate4**